



HC65/ST SPECIFICATIONS

BATTERY DESIGN

- Absorbent glass mat (AGM) technology
- 12V battery VRLA
- Rugged construction
- Can be mounted in any orientation except inverted.
- US DOT and IATA certified non-spillable
- Sealed Construction (Non-Spillable Battery)
- Suited for repeated discharges such as running your vehicle with winches or other electrical accessories
- Can be choose to fitted with TP brass automotive terminal and side terminal
- Shipped fully charged - just install and go!

PERFORMANCE FEATURES

- PHCA: 1500A at 80°F (27°C); for 5 seconds
- PCCA: 1020A at 0°F (-18°C); for 5 seconds
- CCA: 825A at 0°F (-18°C)
- CA/MCA: 1000A at 32°F (0°C)
- HCA: 1200A at 80°F (27°C)
- Reserve capacity: 135 minutes
- Short circuit current: 2200A
- Operation temperature range: -5°F (-15°C) to 122°F (50°C)

Nominal Dimensions

Length		Width		Height		Total Height		Weight	
mm	in	mm	in	mm	in	mm	in	kg	pound
261	10.28	171.5	6.75	182.5	7.19	186.5	7.34	21.10	46.52

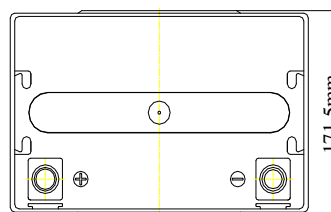
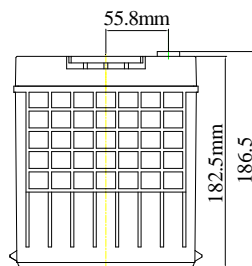
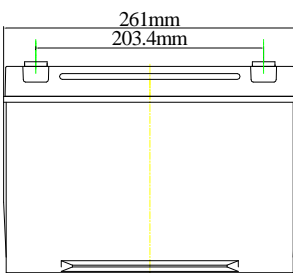
HIGH RATE DISCHARGE AT 77°F (25°C)

5 sec.	10 sec.	15 sec.	20 sec.
1500A	1280A	1170A	1100A

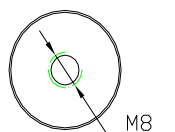
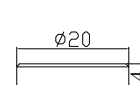
EXTENDED DISCHARGE AT 77°F (25°C) TO 10.02V

5min	15min	1hr	3hr	5hr	10hr	20hr
305A	145A	47A	18A	11A	6.2A	3.4A

PHYSICAL CHARACTERISTICS



Terminal: M8+TP Adaptor+FR45 Side terminal



BATTERY CONFIGURATION



Battery Model: HC65/B
Battery Terminal: M8 (Button terminal)



Battery Model: HC65/S
Battery Terminal: S (M8 Button terminal
Fitted with side terminal)



Battery Model: HC65/ST
Battery Terminal: ST (M8 Button terminal fitted with
TP28 brass automotive terminal and
Side terminal)



Battery Model: HC65/T
Battery Terminal: T (M8 Button terminal fitted
with TP28 brass automotive terminal)